
Accessing Product and Search Information(PaCI) tool from silabs.com

March 2025



What information can be obtained form the tool?

- **General Information**

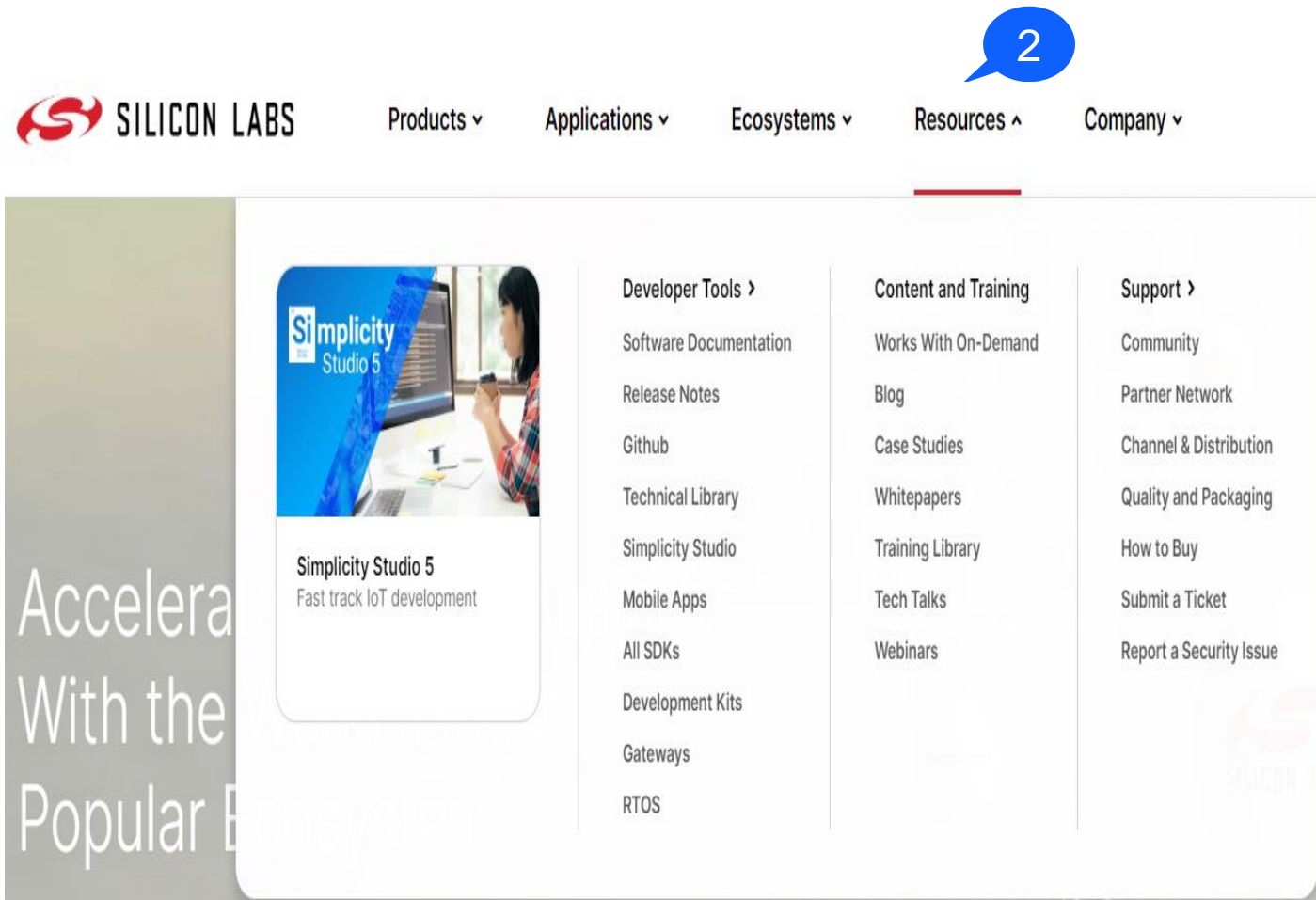
- Quality System Certifications
- Financial information
- Conflict Minerals (CMRT)

- **Product Information**

- Environmental Information (ROHS/REACH CoC, MCD/FMD/MDDS)
- Packing information
- Qualification Data
- Trade Compliance: ECC/HTS Codes
- Supply Chain Information

- **Other uncategorized information**

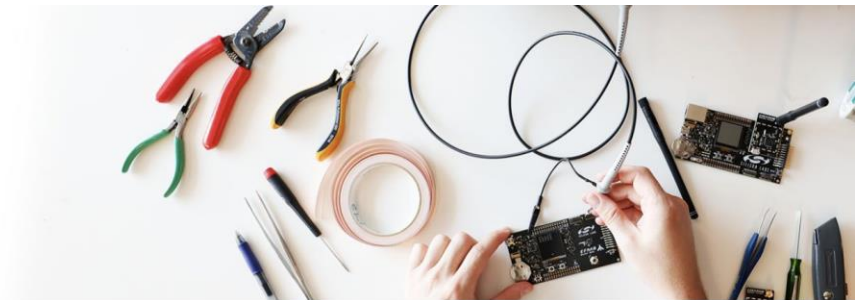
How do I access this tool?



1. Enter www.silabs.com in your browser
2. Navigate to “Resources”
3. Under “Support” click “Quality & Packaging”

Logging in

Quality



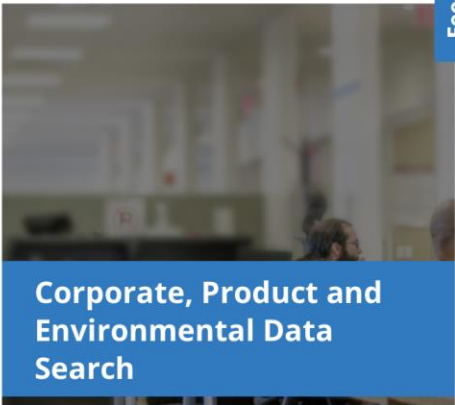
Our business operations, product design and technology investments all take into consideration environmental impact, and we employ strict process controls and continual improvement to our quality, social and environmental management systems. We demand high standards from all of our global supply chain partners, including business integrity and respect for human rights and the planet. We strive to ensure that working conditions are safe, workers are treated with respect and dignity and global manufacturing processes are environmentally and socially responsible.



Quality & Operations Overview



Quality & Reliability Monitor Report



Corporate, Product and Environmental Data Search

4

SILICON LABS

Log in to Silicon Labs

Email

Password ☐ Show

☐ Remember Me

Log in

[Create an Account | Forgot your password?](#)


© 2016 Silicon Labs. All rights reserved.

5

6


4. Click on "Corporate, Product and Environmental Data Search". You will be redirected to a sign in page
5. If you already have an account on silabs.com, please sign in
6. If you do not, sign up by clicking "Create an Account"

Searching Data

 **Product and Company Information (PaCI) Search** [Contact](#)

Part Number Search

Search for general and product specific information (Company Profile, ISO Cert, Product Rev

☒ Enter Part Number (Full or Partial): 



☐ General (Non-Part Specific)

Part Number List Result

Please select part number below, and go to: or

EFM8BB10F4A-A-QFN20

EFM8BB10F4A-A-QFN20R



7. Enter Part number and click red arrow
8. Pick a Part Number and click “Show All Data”


HINT: Use browser search feature i.e. “Ctrl+F” (commnd+F, if you are using a Mac device) to search for a keyword for quick access. Example: ‘ROHS’ yields the certificate of conformance

Search Results

Search Data Results

Part Number Selected: **EFM8BB10F4A-A-QFN20R**

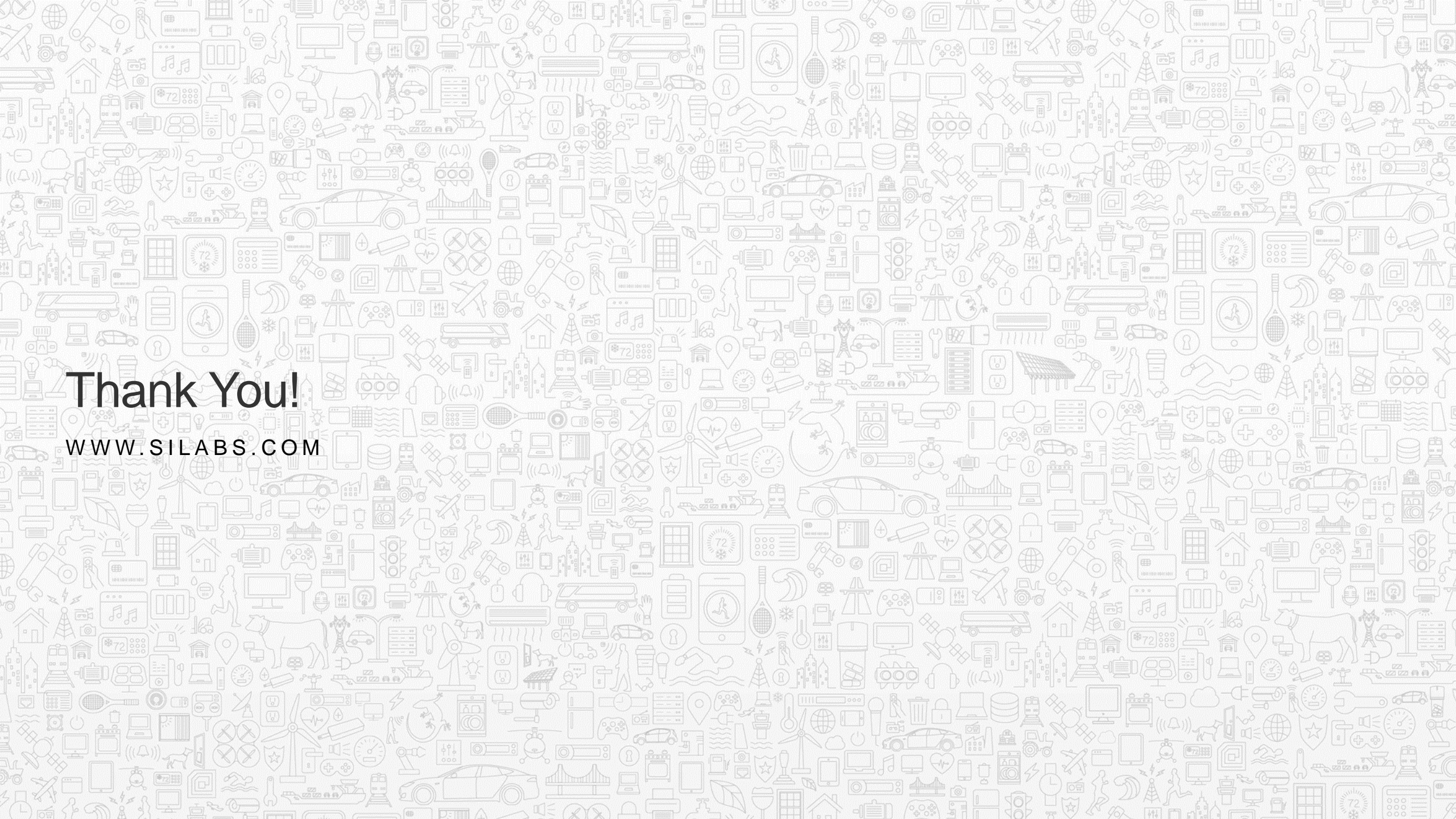


 General (Non-Part Specific) Results: | 7/26/2021 10:59 AM |

Data	Value
Company Name	Silicon Laboratories Inc.
Company Address	400 W. Cesar Chavez Austin, TX 78701
Date of Incorporation	1996
Terms and Conditions	Link
California SB 657	Link (PDF)
Corp Social Responsibility	Link (PDF)
Supplier Code of Conduct	Link
California Proposition 65	Link (PDF)
Headquarters Location	Austin, TX
International Location	Singapore
Corporation Type	C-Corp (Delaware)

Useful Tips

- Results are classified into 2 sections i.e. General (Non-Part Specific) and Primary/Secondary Results (Part-Specific)
- EU RoHS, RoHS3 and China RoHS are covered under a single declaration
- MCD/FMD are captured as Detailed Device Composition (MDDS) on the tool
- Some of our legacy products may have missing information, please contact sales for more information
- Use browser search function and enter keywords to locate data. As an example, doing a “CTRL + F” on a windows machine for “CMRT” yields the location of the CMRT statement



Thank You!

WWW.SILABS.COM